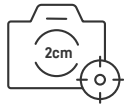


FJD Trion™ P1

LiDAR SCANNER

NEW DIMENSIONS UNFOLD

Whether you are a seasoned pro or just 3D-curious, a walk around the site with the PI lets you digitize your environment quickly and accurately.



Relative Accuracy
Up to 2 cm



Scanning Range
40 m @ 10% reflectivity
70 m @ 80% reflectivity



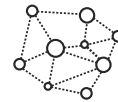
LiDAR FOV
360° × 59°



Points Per Second
200,000



Lightweight and Portable
1 kg / 2.2 lbs



Real-time Point Cloud
Visualize as you scan

EASY REALITY CAPTURE

Indoor, outdoor, underground, all day long

Powerful SLAM technology enables the PI to work in direct sunlight or even at night, in locations that may be inaccessible with traditional methods.



Compact yet mighty

Weighing in at only 1 kg or slightly over 2 lbs, the PI fits in a messenger bag and can work all day with easy battery swaps, recreating your environment in minutes.



REBUILD WHAT YOU SEE

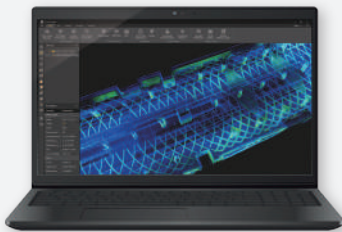
Advanced SLAM technology does not have to cost a fortune. No more complicated instrument calibration or lengthy workflows processing point cloud data. The plug-and-play design and accessible price point of the P1 empowers you to explore boundless creativity, streamline data processing, and digitize assets with ease.

Workflow



Capture

Walk, scan, and view point cloud data in real-time.



Analyze

Process point cloud data in las, pcd, pts, ply using Trion Model. Scan to post-processing time ratio is about 3:1.



Deliver

Calculate distance, area, and volume. Create contours, floor plans, forest analyses, and 3D models like BIM.

CONFIGURATIONS

Camera

Capture RGB videos with camera.



RTK

Generate georeferenced point cloud data.



APPLICATION SCENARIOS



QUICK SPECS

Weight	1 kg (excluding camera & baseplate)	Power Source	Rechargeable Grip Battery
Dimensions	160 × 120 × 270 mm (excluding camera)	Power Supply	10.8 V, 3 A
Relative Accuracy	Up to 2 cm* <small>*Tested in experimental conditions</small>	Power Supply Interface	Type-C
Scanning Range	40 m @10% reflectivity 70 m @80% reflectivity	Data Transmission	USB-3.0
Laser Wavelength	905 nm	Power Consumption	12 W (Scanner only)
Laser Rating	Eye-safety Class I	Battery Life	2 h (Grip Battery, Room Temperature, Scanner only)
Field of View	360° x 59°	Wi-Fi	2.4, 5 Ghz
Number of Laser Heads	1	Internal Memory	512 GB
Point Rate	200,000 points/second	Operating Temperature	-10 C ~ 45 C
Point Cloud Processing	Real-time processing	Camera Resolution	5760 × 2880 @ 30 fps
Point Cloud Display	Real-time point cloud preview	Camera Field of View (FOV)	180°

Contact your local FJDynamics Authorized Distribution Partner for more information.

Free Quote: sales.global@fjdynamics.com
Address: 15 SCOTTS ROAD #03-12, Singapore

FJDynamics.com 

CREATE FOR A BETTER WORLD

Copyright © FJDynamics. All rights reserved.



A NEW WAY TO SCAN THE WORLD



FJD Trion™ S1

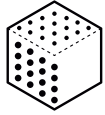
3D LiDAR SCANNER

A NEW WAY TO SCAN THE WORLD

A new way to “see” the world around you.

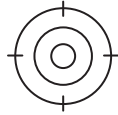
With 320,000 scan points per second, S1 catches high-quality scans hands down.

With an industry-leading SLAM algorithm, S1 captures, processes, and displays accurate point clouds on the mobile terminal in real-time.



320,000

Points per Second



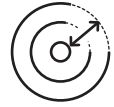
2 cm*

Relative Accuracy



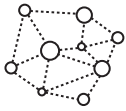
16

Sensors



120 m

Range



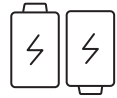
Real-Time Point
Cloud



Indoor & Outdoor
Scanning



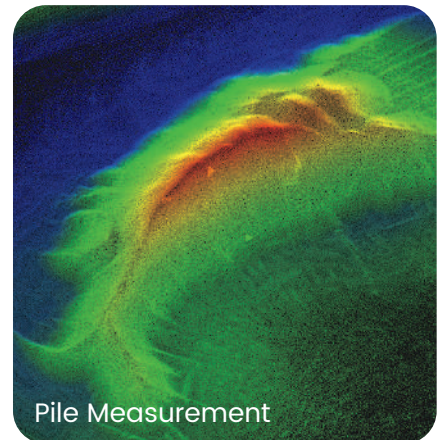
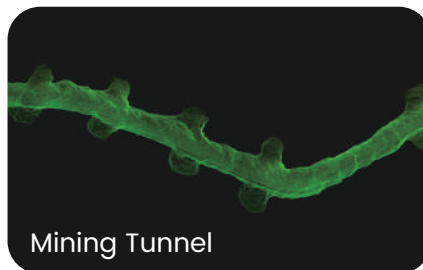
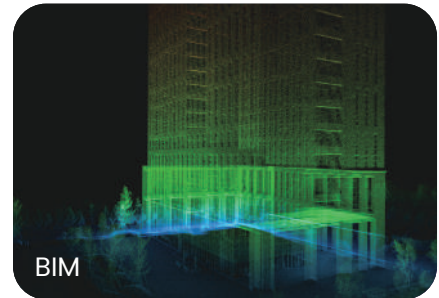
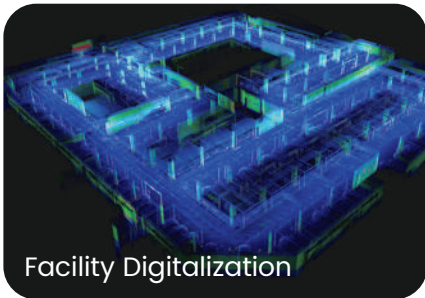
Lightweight
and More Portable



Dual Battery
Hot-swappable

APPLICATION SCENARIOS

Indoor, outdoor and even underground without a GNSS receiver.



AS VERSATILE AS IT IS PORTABLE

Lightweight design for easy portability.
Real-time point cloud display and SLAM processing.



YOUR POINT CLOUD STUDIO



FJD TRION SCAN

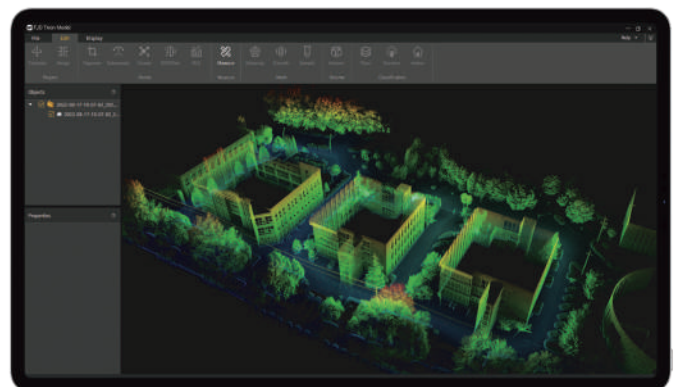
Real-Time Visualization of **3D Point Clouds** Software

- Displays the scanned project files, storage capacity, and battery life
- Visualizes the point cloud in real-time
- Tracks real-time path
- Manages and downloads the project files

FJD TRION MODEL

Point Cloud Post-Process Software

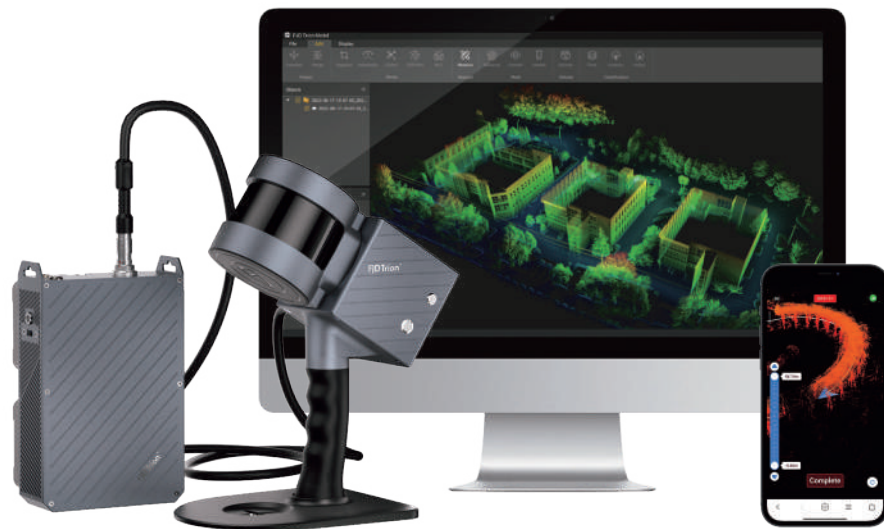
- Denoises and colorizes point clouds
- Stitches point clouds, maps shadow, transforms coordinates, and does automatic plane fitting
- Classifies point clouds, produces 2D drawings, and builds 3D models



QUICK SPECS

Range	120 m	Sensors	16
FOV	360°×270°	Laser Class	Class 1 / λ 905 nm
Points per Second	320,000	Relative Accuracy	2 cm*
Display	Real-time preview on mobile terminal	Processing	Real-time
Datalogger Weight (Incl. single battery)	2.2 kg	Carrier	Backpack or shoulder strap
Battery Life (Dual battery)	4 hours	Scanner Weight	1.8 kg
Ingress Protection	IP54	Storage Capacity	512 GB

*Measured in experimental environment



Free Quote: sales.global@fjdynamics.com
Address: 15 SCOTTS ROAD #03-12, Singapore

[FJDynamics.com](https://www.fjdynamics.com) 



CREATE FOR A BETTER WORLD

Copyright © FJDynamics. All rights reserved.