

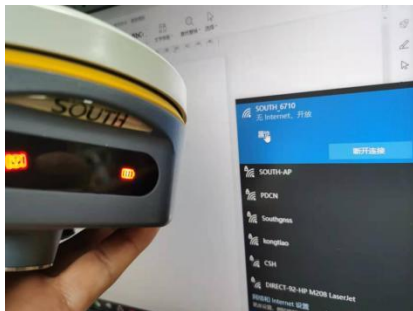
# How to set the G2 to output the MNEA data?

## 1.How to get fixed solution

Install a SIM card to the RTK device



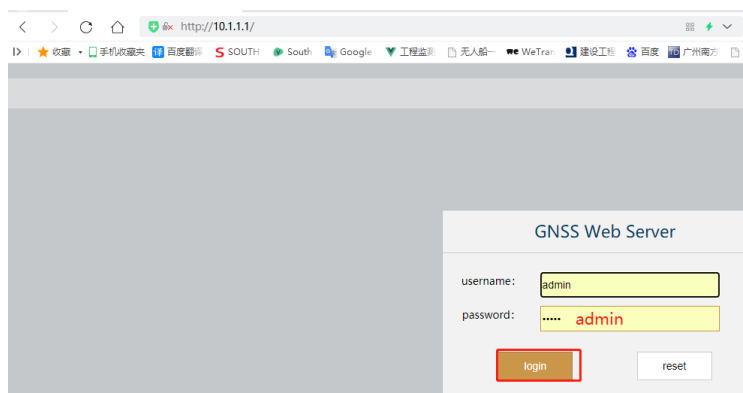
Let your Laptop PC or cell phone or Tablet connect to the G2 via wifi



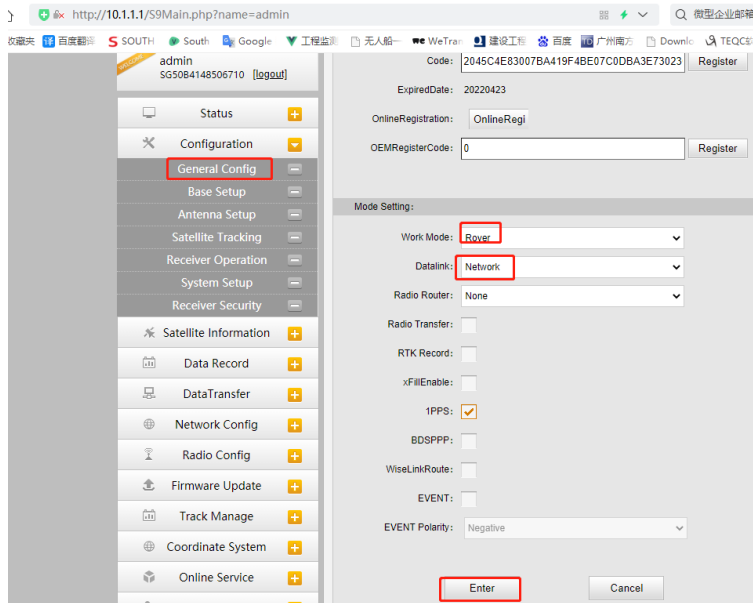
Login the WEBUI run browser and input the IP address 10.1.1.1 and enter

User name admin

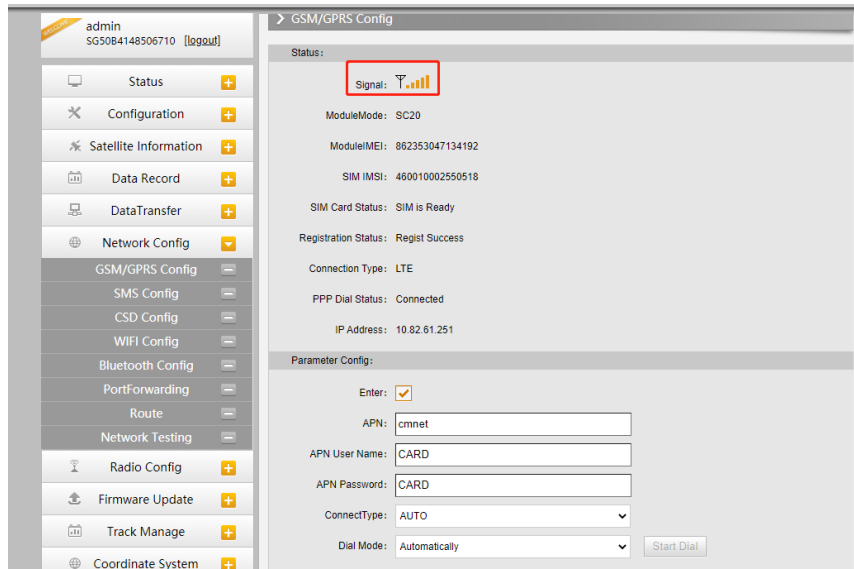
password admin



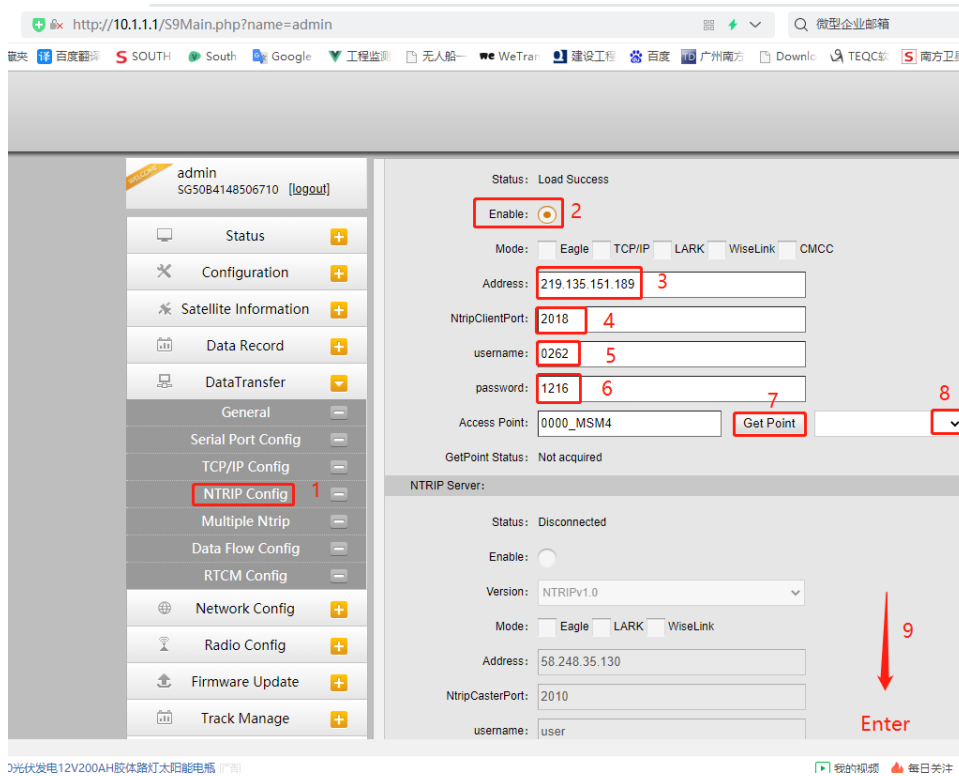
Set the work mode: **ROVER**; DATALINK: **Network**



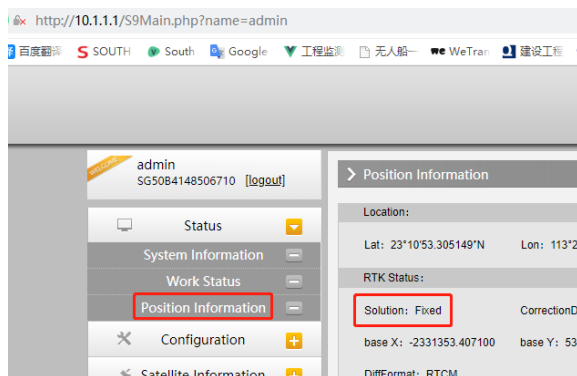
Watch the mobile network is OK (For overseas clients maybe they need to set the right APN when using local network)



Set the datalink as shown in picture,  
 Input your CORS account( IP, port, username, password ) and them click “Get Point”,  
 and then select an access point, and then click”Enter” at the bottom of this page



Watch that the device has got the fixed solution



Actually, without fixed solution, it still can output the NMEA data, just the position is not high accuracy.

In order to remove the voice repeating “LTE connected”, untick the voice output:

The screenshot displays the 'System Setup' configuration page. On the left is a navigation menu with 'System Setup' highlighted in a red box. The main content area shows various settings. At the top, the 'Voice' checkbox is checked and highlighted with a red box, with the text 'untick' written in red next to it. Below this are several other settings, each with a radio button or dropdown menu:

- OEMUserDefEnable:  Yes  No
- RTKEngine:  Yes  No
- Volume: Medium (dropdown)
- Power Mode: Normal (dropdown)
- USB: (dropdown)
- Default Language: English (dropdown)
- Time Zone(h): +8.0(Beijing China) (dropdown)
- FixedMode: Narrow (dropdown)
- NmeaHeader: GN (dropdown)
- SelfDefine Module: NULL (dropdown)
- Authority Zone: Global-20991215
- RTXsatellite: Auto (dropdown)
- Satellites View Mode: Solving Satellite (dropdown)
- Satellite System: All (dropdown)
- Enhanced Positioning: Disable (dropdown)
- ITRFepoch: 2005 (dropdown)

Thanks!